

ENSO: Recent Evolution, Current Status and Predictions



Update prepared by:
Climate Prediction Center / NCEP
27 March 2017

Summary

ENSO Alert System Status: Not Active

ENSO-neutral conditions are present.*

Equatorial sea surface temperatures (SSTs) are near-average across the central and east-central Pacific. They are above-average in the eastern Pacific Ocean.

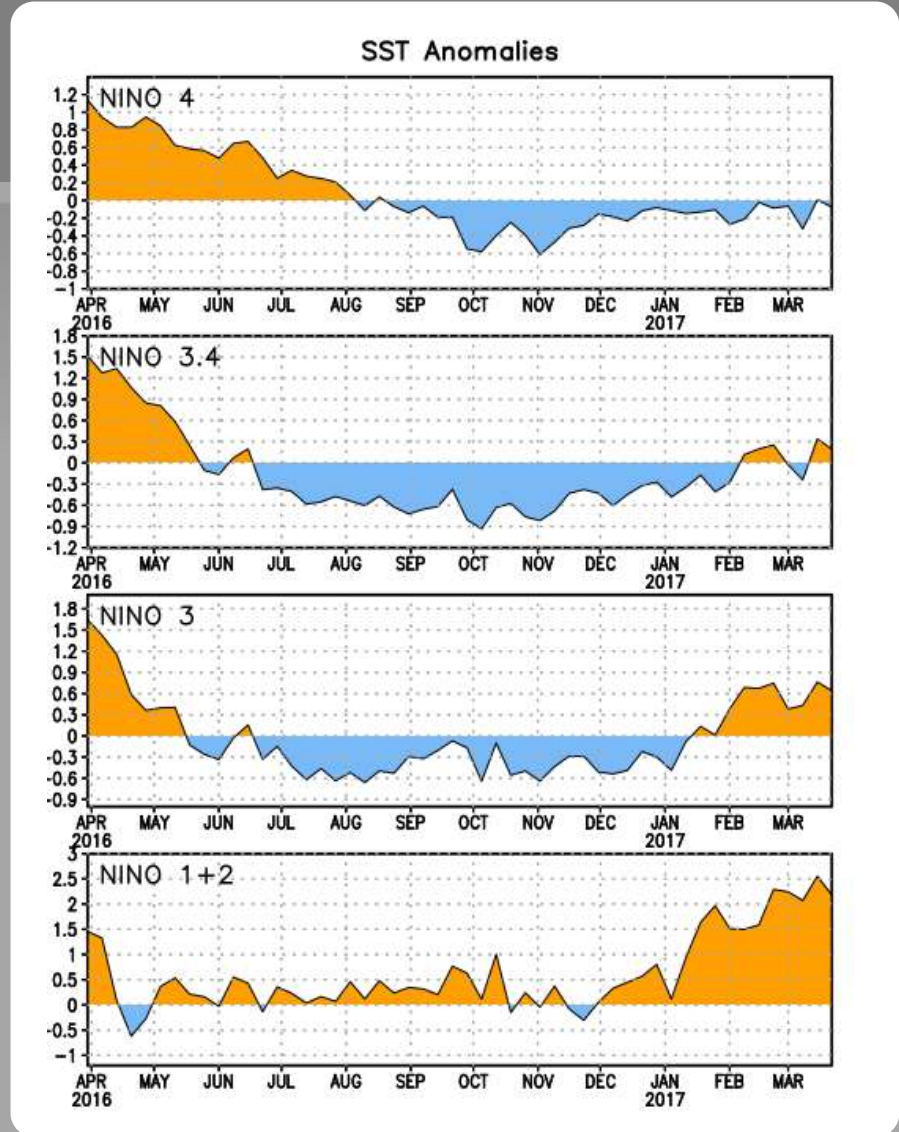
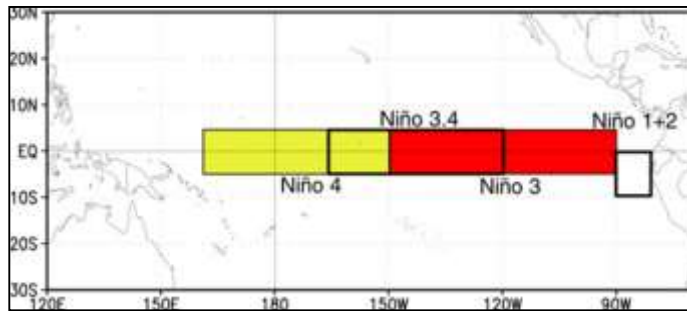
ENSO-neutral conditions are favored to continue through at least the Northern Hemisphere spring 2017, with increasing chances for El Niño development into the fall.*

* Note: These statements are updated once a month (2nd Thursday of each month) in association with the ENSO Diagnostics Discussion, which can be found by clicking [here](#).

Niño Region SST Departures (°C) Recent Evolution

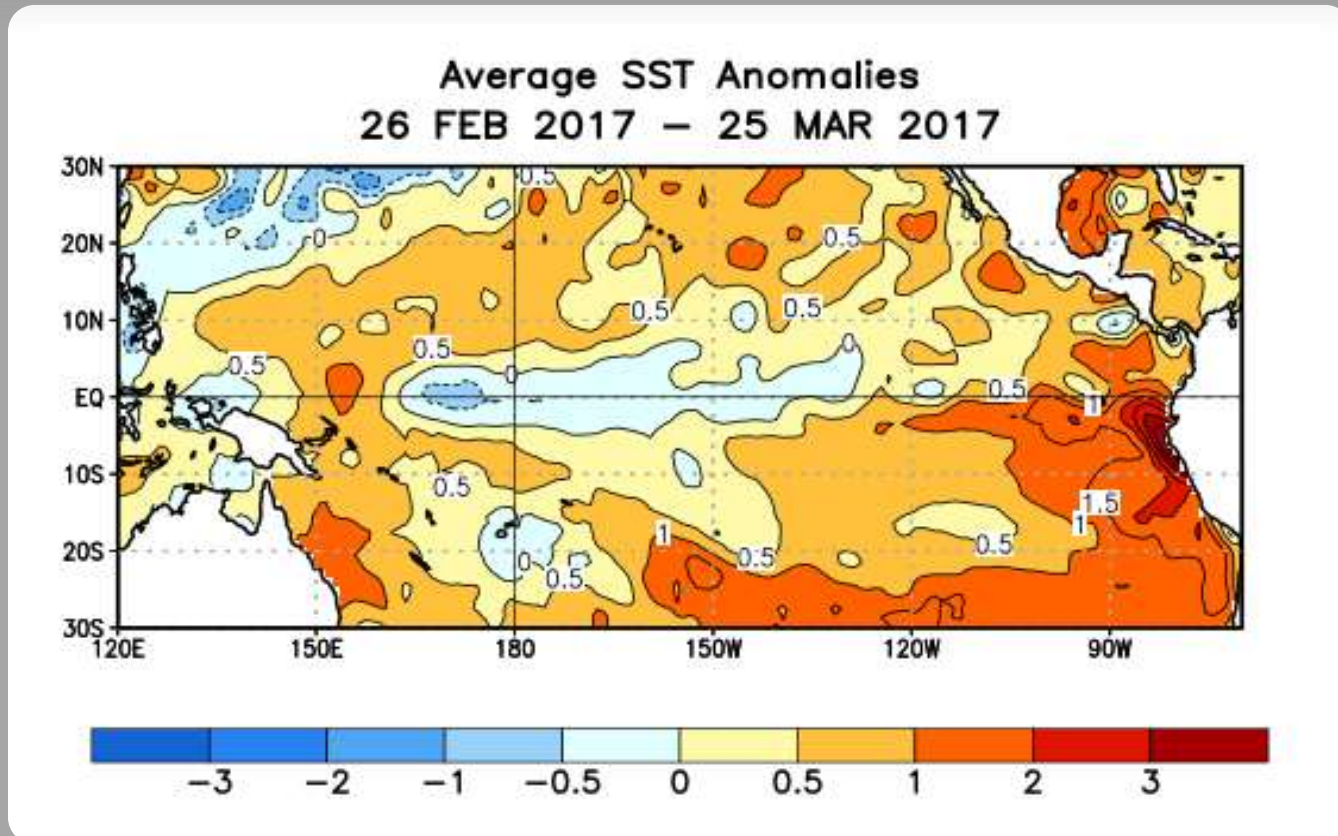
The latest weekly SST departures are:

Niño 4	-0.1°C
Niño 3.4	0.2°C
Niño 3	0.6°C
Niño 1+2	2.2°C



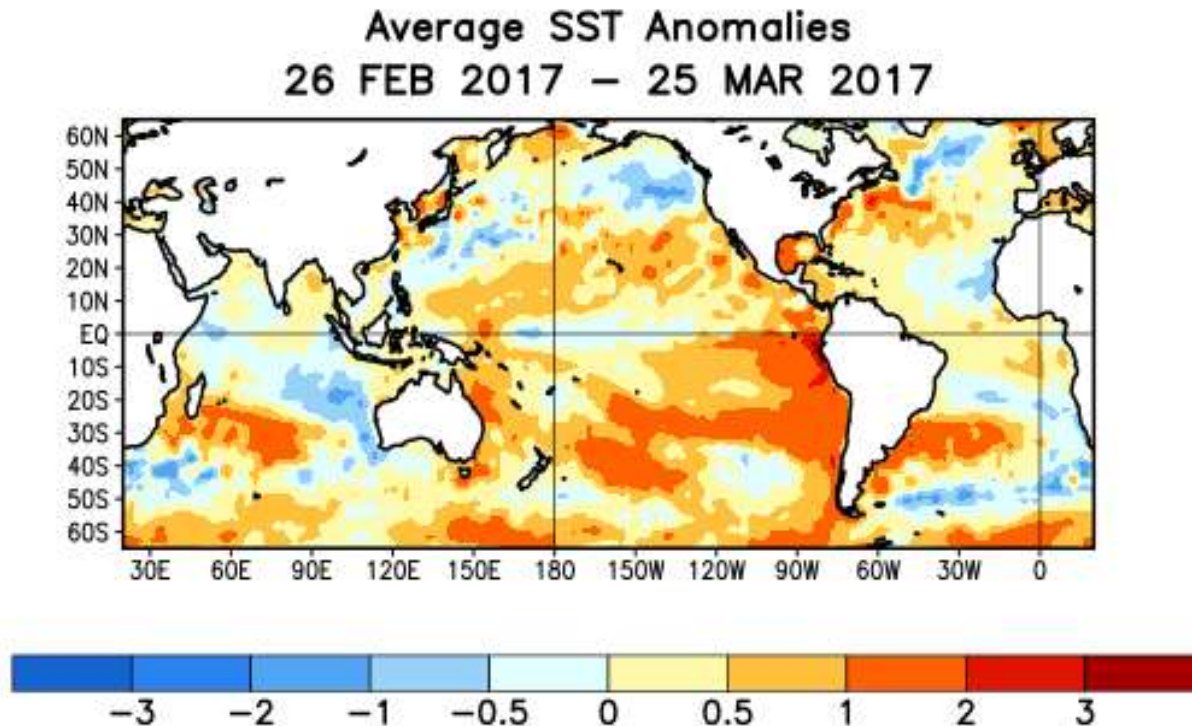
SST Departures (°C) in the Tropical Pacific During the Last Four Weeks

During the last four weeks, equatorial SSTs were near-to-below average across the central Pacific Ocean, and above-average across the eastern Pacific.



Global SST Departures (°C) During the Last Four Weeks

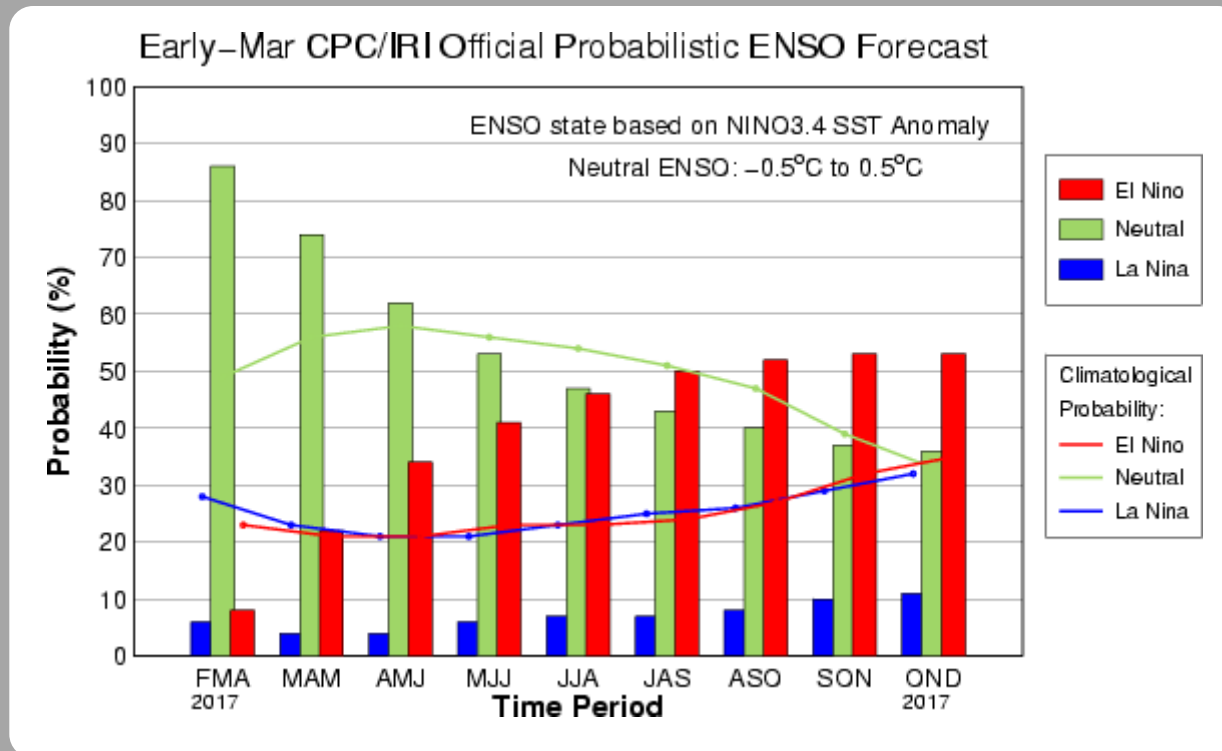
During the last four weeks, equatorial SSTs were above average in the eastern Pacific. Equatorial SSTs were near-to-below average across the western and eastern Indian Ocean and the central Pacific Ocean.



CPC/IRI Probabilistic ENSO Outlook

Updated: 9 March 2017

ENSO-neutral is favored through mid-2017, with a slight tilt toward El Niño (~50%) during the late summer through fall 2017.



IRI/CPC Pacific Niño

3.4 SST Model Outlook

Most dynamical models favor El Niño during the early Northern Hemisphere summer 2017, while statistical models favor ENSO-neutral through the Northern Hemisphere autumn 2017.

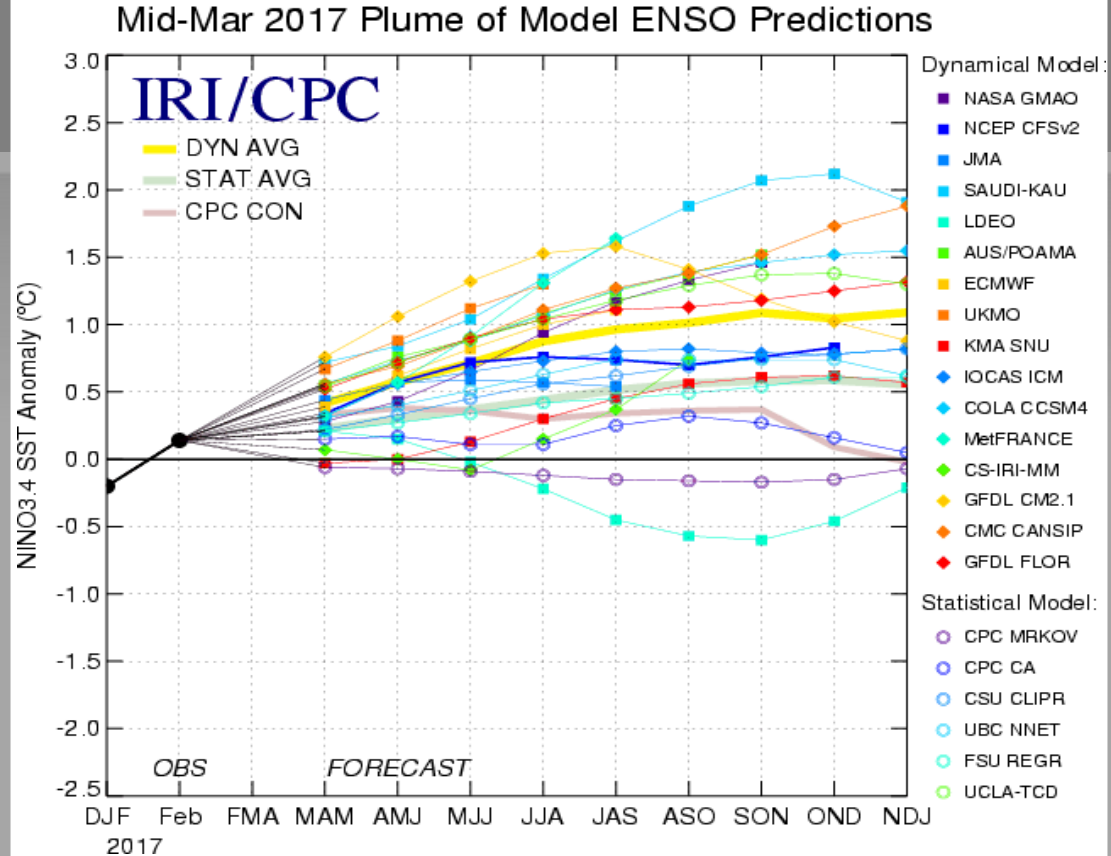


Figure provided by the International Research Institute (IRI) for Climate and Society (updated 15 March 2017).

Summary

ENSO Alert System Status: Not Active

ENSO-neutral conditions are present.*

Equatorial sea surface temperatures (SSTs) are near-average across the central and east-central Pacific. They are above-average in the eastern Pacific Ocean.

ENSO-neutral conditions are favored to continue through at least the Northern Hemisphere spring 2017, with increasing chances for El Niño development into the fall.*

* Note: These statements are updated once a month (2nd Thursday of each month) in association with the ENSO Diagnostics Discussion, which can be found by clicking [here](#).